

Aloha and Welcome to the Hawaii Emergency Management Agency



Luke Meyers/Administrator



Our Mission:

To help the Hawaii Ohana prepare for and respond to disaster and emergencies.

Prevention - Protection - Mitigation - Response - Recovery





Office of the Governor



David Y. Ige

Hawaii State Department of Defense

**Director of
Emergency Management**



Major General
Kenneth S. Hara

**Adjutant General /
Homeland Security
Advisor**

**Deputy Adjutant
General**

**Hawaii
Emergency
Management
Agency**

**Hawaii
Army
National
Guard**

**Hawaii
Air
National
Guard**

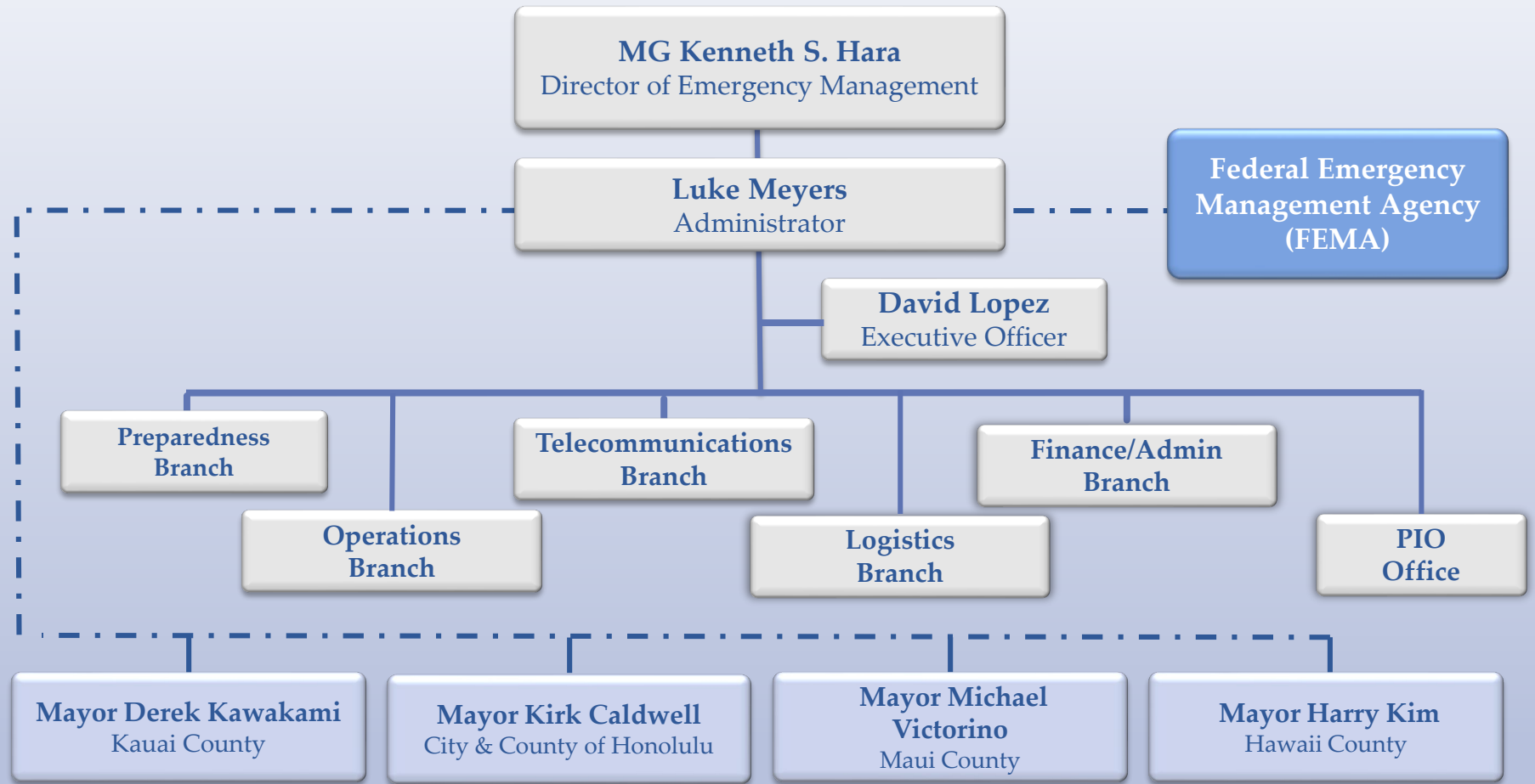
**Homeland
Security
Office**

**Office of
Veterans
Services
(attached)**

**HING
Youth
Challenge
Program**



Hawaii Emergency Management Agency





Disaster Response and Assistance

- + National Guard
- + EMAC
- + Agency Resources
- + Supplies

State

Federal

Federal Support Following a Presidential Disaster Declaration

Request Federal Assistance if Needed

Governor Declares State of Disaster

State EOC Coordinates State and Other Resources

County

County EOC Coordinates Local Resources

First Responders

Incident

- + Funding
- + Staffing
- + Agency Resources
- + Defense Support to Civil Authorities



COVID-19 Coordination

✓ State Incident Management Structure

- ✓ Tracking COVID-19 since January 2020
- ✓ State Emergency Operations Center Activated Since February 25, 2020,
- ✓ First half March Focused State Agencies in several areas: Health Operations Task Force, Transportation Task Force, Law Enforcement Task Forces, Logistics Task Force, Support Services Task Force. Conducted Refresh of State Agency COOP Planning
- ✓ Over Last 7 Months the Incident has evolved and so has State Incident Management Structure
- ✓ Managing/Coordinating Other Incidents (Flooding March 2020 and Hurricane Douglas July 2020), plus open disasters Volcanic Incident 2018, Flooding April 018, and Hurricane Lane August 2018)
- ✓ FEMA Disaster DR-4510-HI – COVID-19

✓ Products For Situational Awareness

- ✓ State Emergency Operations Center has produced:
 - ✓ 233 Situation Reports, 40 Incident Action Plans, and Daily Common Operating Pictures
 - ✓ Shared with public and private partners

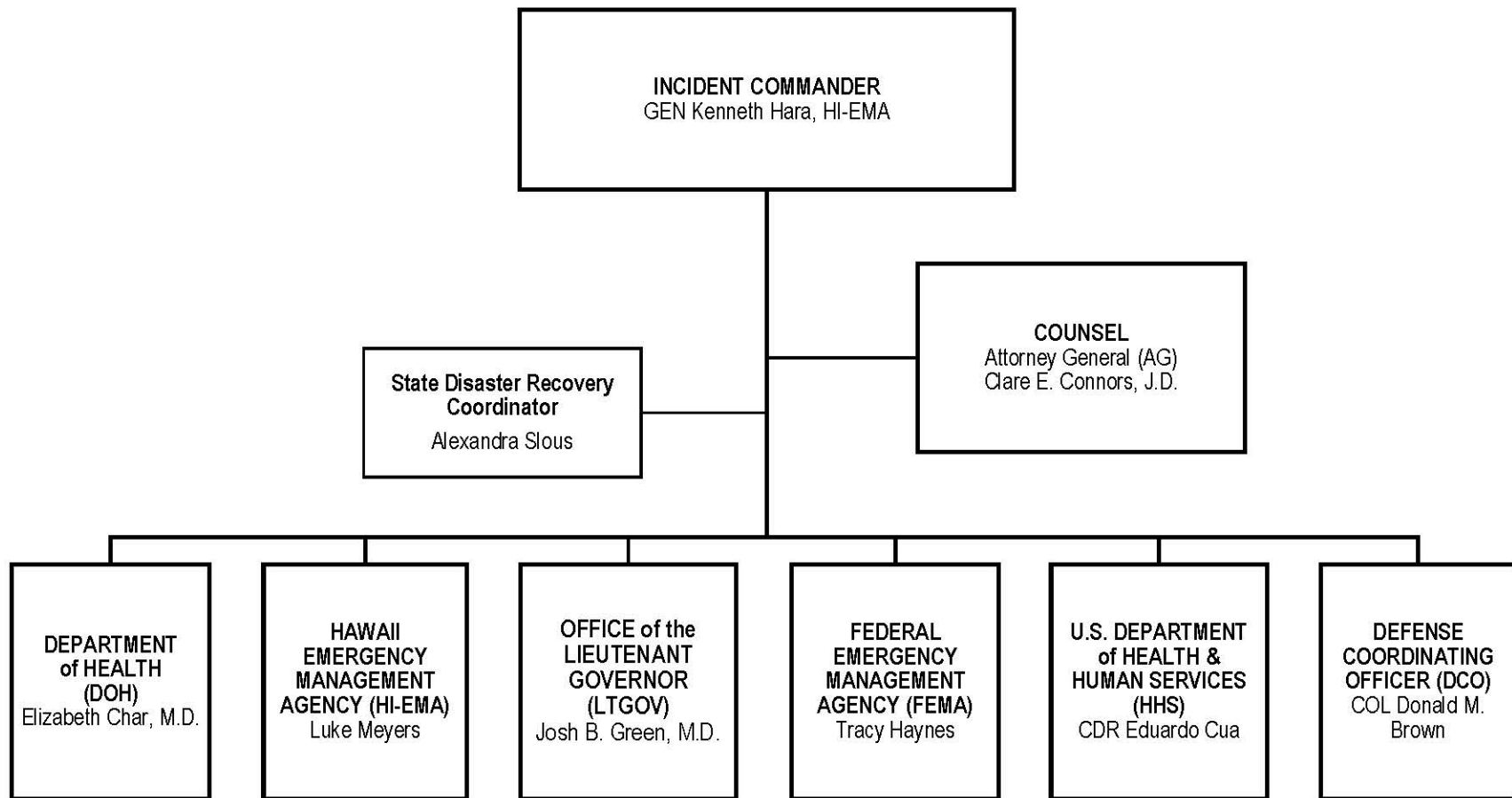
✓ October 2020

- ✓ Large Mission Areas Supporting
 - ✓ Travel Restriction Mission
 - ✓ Testing/Contact Tracing Mission
 - ✓ Incident Health Facility Mission
 - ✓ Health and Medical Staffing Mission
 - ✓ Messaging – State JIC / JIS Mission
 - ✓ Logistics Support Mission

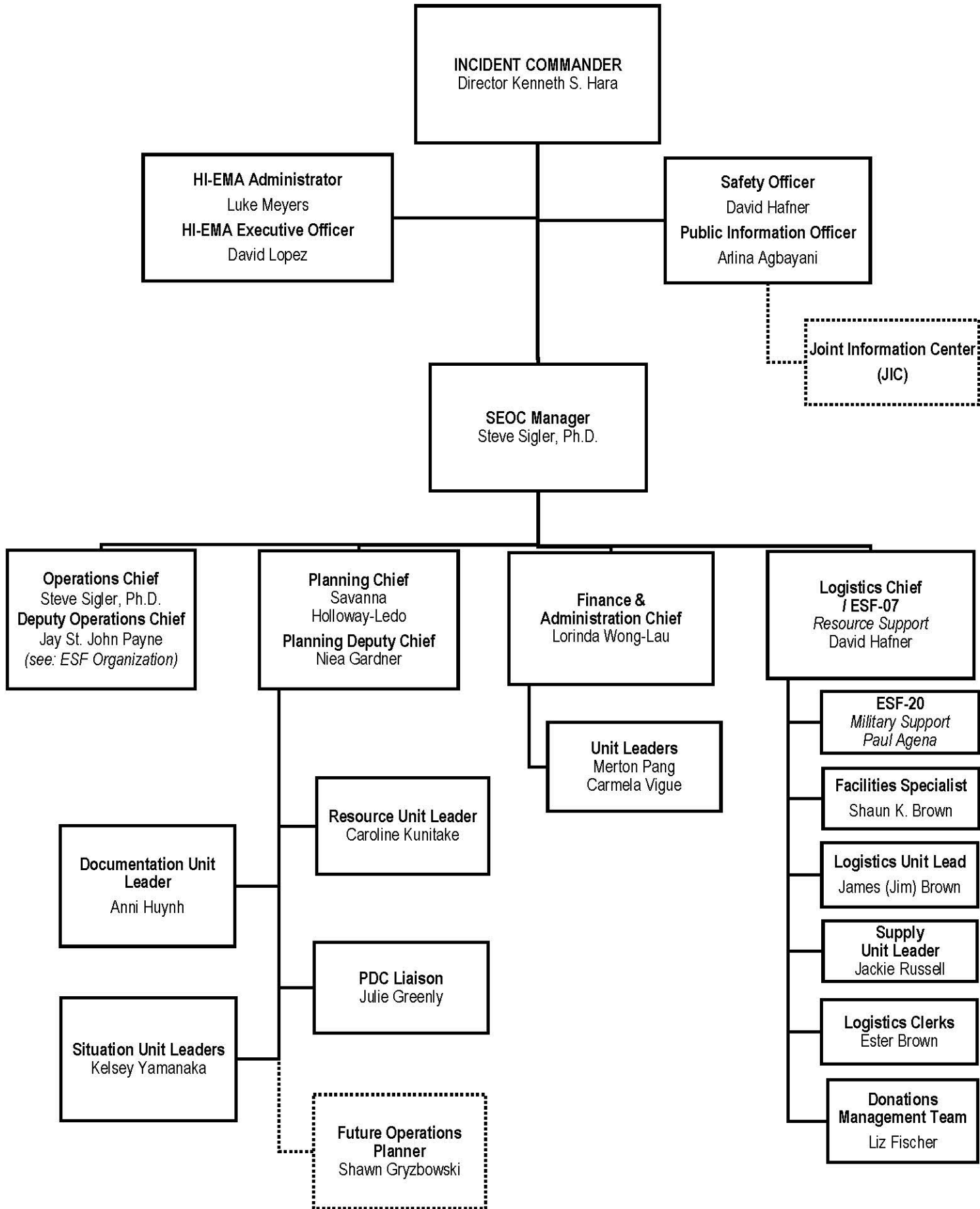
9282019	1/26
	[CHAPTER 127A] EMERGENCY MANAGEMENT
Section	
127A-1	Petty and surplus
127A-2	Third class
127A-3	Local emergency management agency
127A-4	State emergency council or emergency operations
127A-5	State emergency management agency
127A-6	Emergency control group
127A-7	State warning plan
127A-8	State and signs of personnel
127A-9	Emergency plans
127A-10	Political activity prohibited
127A-11	Power on when emergency declaration of power
127A-12	Emergency management powers in general
127A-13	Additional powers in an emergency period
127A-14	State of emergency
127A-15	Restrictions on radio service of papers
127A-16	Water disaster fund
127A-17	Altruism
127A-18	Effect of suspension of hazardous situations
127A-19	Shelter
127A-20	Penalty for violation of private order
127A-21	Repeal of regulation
127A-22	Repeal of suspension
127A-23	Repeal of damage
127A-24	Repeal of order and survey
127A-25	Repeal of order
127A-26	Repeal of order
127A-27	Repeal of order or interagency instruction and emergency concerning order
127A-28	Repeal of order or instruction proceeding in violation
127A-29	Repeal of order
127A-30	Repeal of order of essential commodities during a state of emergency prohibition against price increases
127A-31	Penalties prescribed by this chapter additional to other penalties
127A-32	Effect of this chapter on other laws
	Note
	Section 127A-11a is repealed by Act 2017, c. 224.
	Section 127A-11b is repealed by Act 2017, c. 224.
	Section 127A-11c is repealed by Act 2017, c. 224.
Revised	Version: 01/21/2020 Next



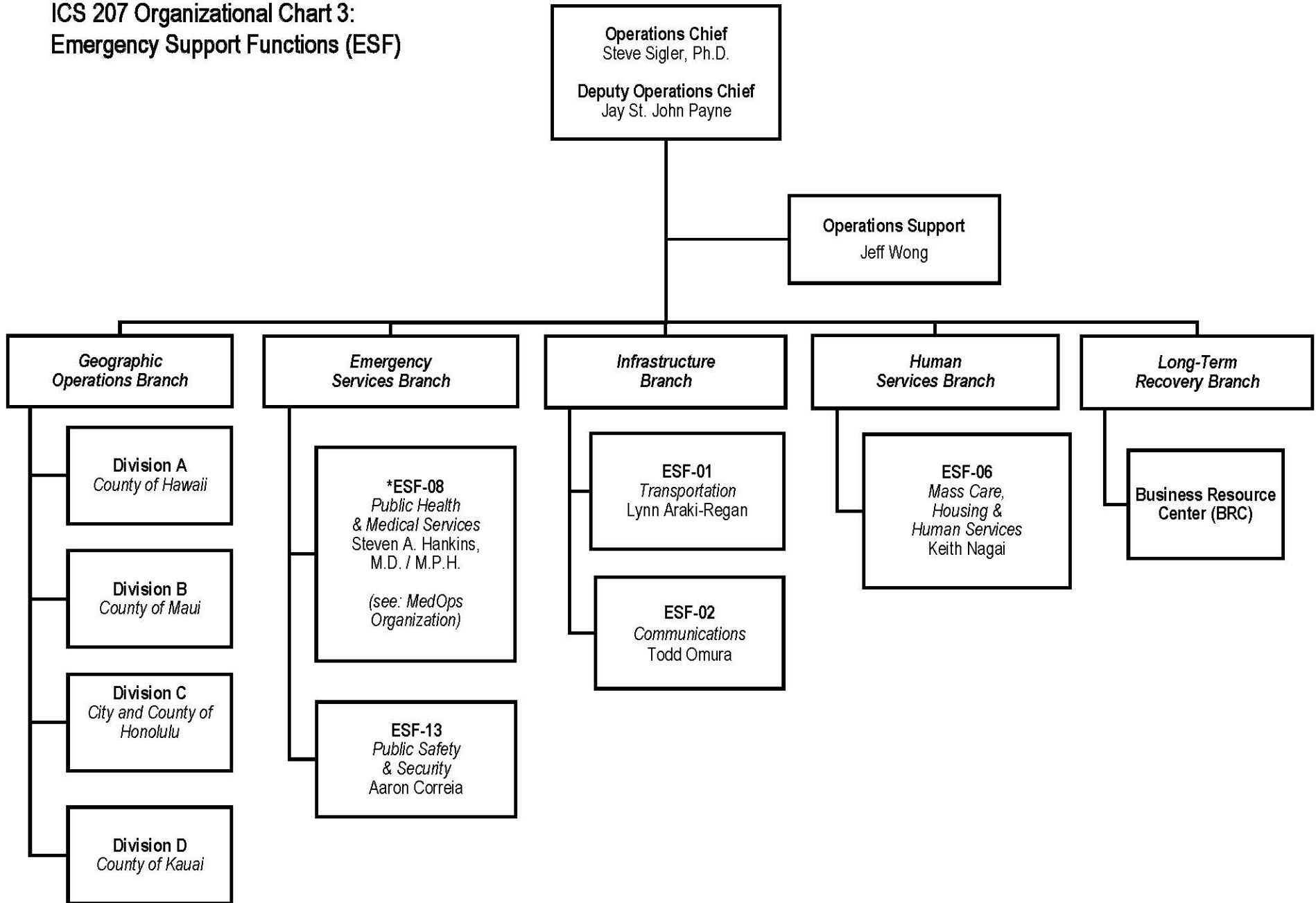
ICS 207 Organizational Chart 1: Unified Coordination Group (UCG)



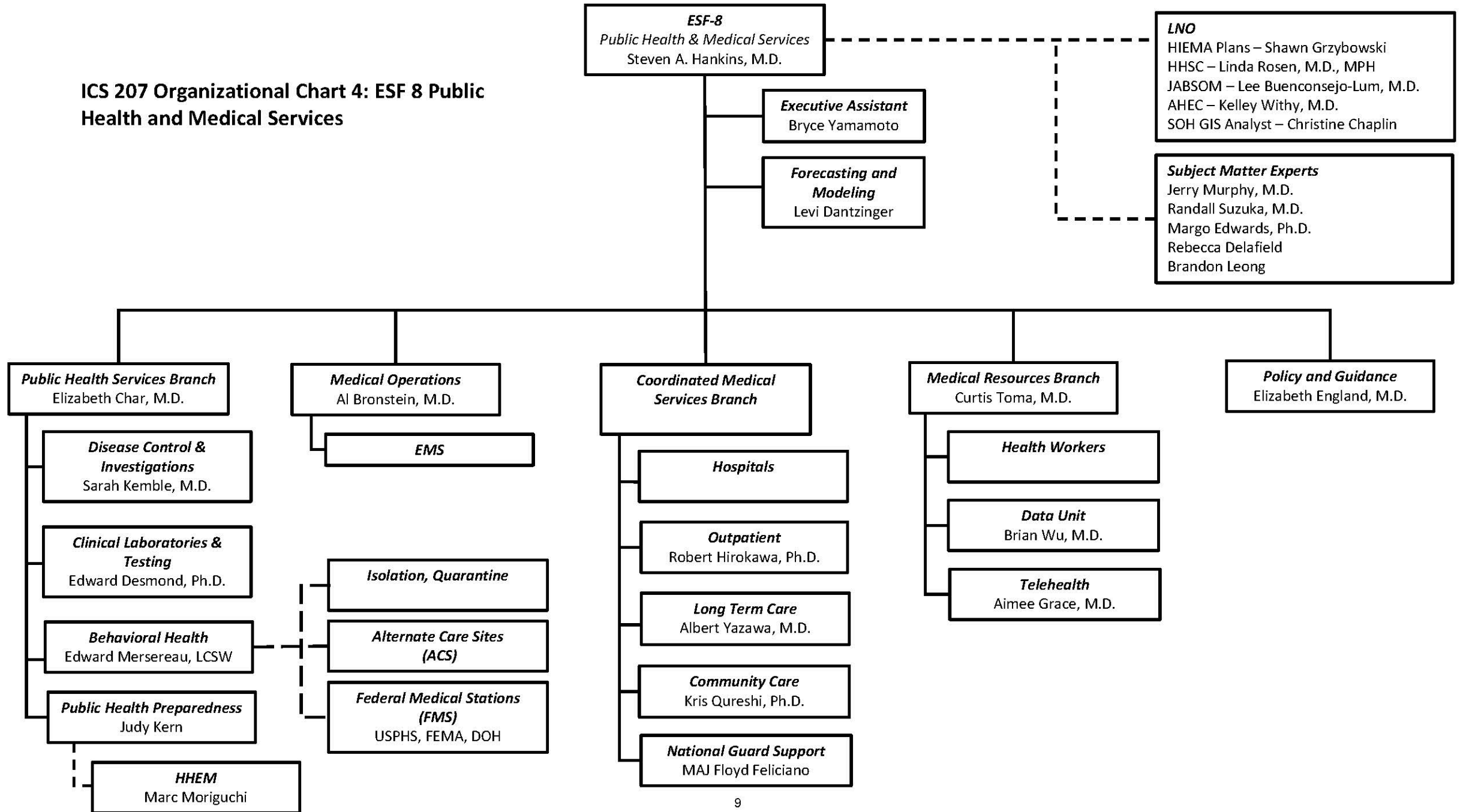
ICS 207 Organizational Chart 2: Incident Management Staff



**ICS 207 Organizational Chart 3:
Emergency Support Functions (ESF)**



ICS 207 Organizational Chart 4: ESF 8 Public Health and Medical Services



HI-EMA Request Tracker

20-01-24 COVID-19

Quick Guide

+ New Request Actions

Switch to Legacy View Switch to Exportable View

Statistics

Total Request for this incident: 834 (Assistance: 611 | Information: 223)
 OPEN Requests: 157
 CLOSED Requests: 677
 CREATED in the last 24hrs: 2 (Assistance: 2 | Information: 0)
 CLOSED in the last 24hrs: 0 (Assistance: 0 | Information: 0)
 Total cost of resources spent on this incident: \$127,259,954.69

View Statistical Assignment by Entity

Filtering Options

Request made by: All Requesters
 Request assigned to: All Entity

Search for ID, keywords and names in an RFA/RFI (Use % as a wildcard / ie %Name%): Search Clear

Type	ID	For	Priority	Date Made	Request	Assigned To	Planning (1)	Approval	Execution (2)	Status
	85617	State	Urgent	Oct 22, 2020 10:25:22	DLNR-DOCARE-Kauai-Request PPE and IH by DLNR Denise Manuel	ASSIGN MISSION				OPEN
	85615	State	Urgent	Oct 22, 2020 10:14:14	Request PPE and IH by DLNR Denise Manuel	ASSIGN MISSION				OPEN
	85316	Hawaii County	Urgent	Oct 14, 2020 08:36:37	Safe Travels Emergency Rule by Hawaii EMA Jav.St. John Payne	HCDA Assigned by Jay St. John Payne	NEED REVIEW			OPEN

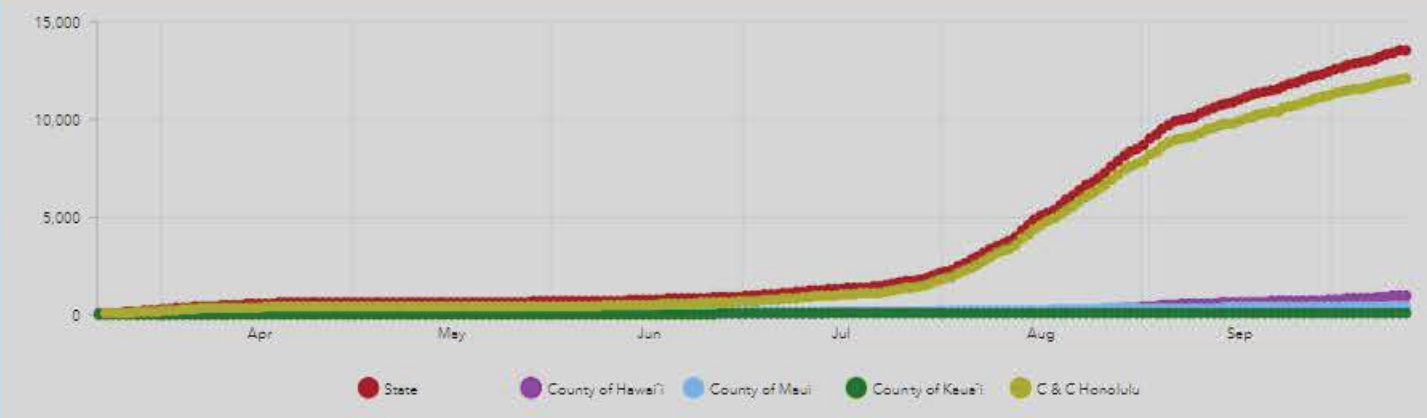
CONFIRMED CASES

2,564 (Active)
 13,514

POSITIVE CASES: LAST 24HRS

42

Last 24 Hr Trend



Cases by County Daily Trends: Totals HAH Trends Trends by State ISO/Quarantine Hotel Capacity (Oahu) Surveys

ICU BEDS IN USE (%)

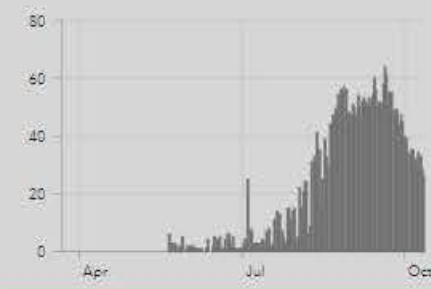
NICU & PICU beds not included

131/244

54%
 COVID+ use: 26
 (Confirmed/Suspected COVID+ use)

ICU Beds in use ICU Beds

TRENDS: COVID+ ICU BEDS IN USE



VENTILATORS IN USE (%)

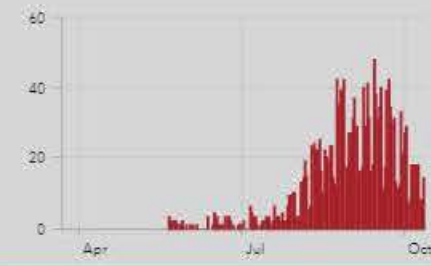
NICU & PICU vents not included

80/459

17%
 COVID+ use: 14
 (Confirmed/Suspected COVID+ use)

Ventilators in use Ventilators

TRENDS: COVID+ VENTILATORS IN USE



HOSPITALIZED: CONFIRMED

109

939 (Cumulative)

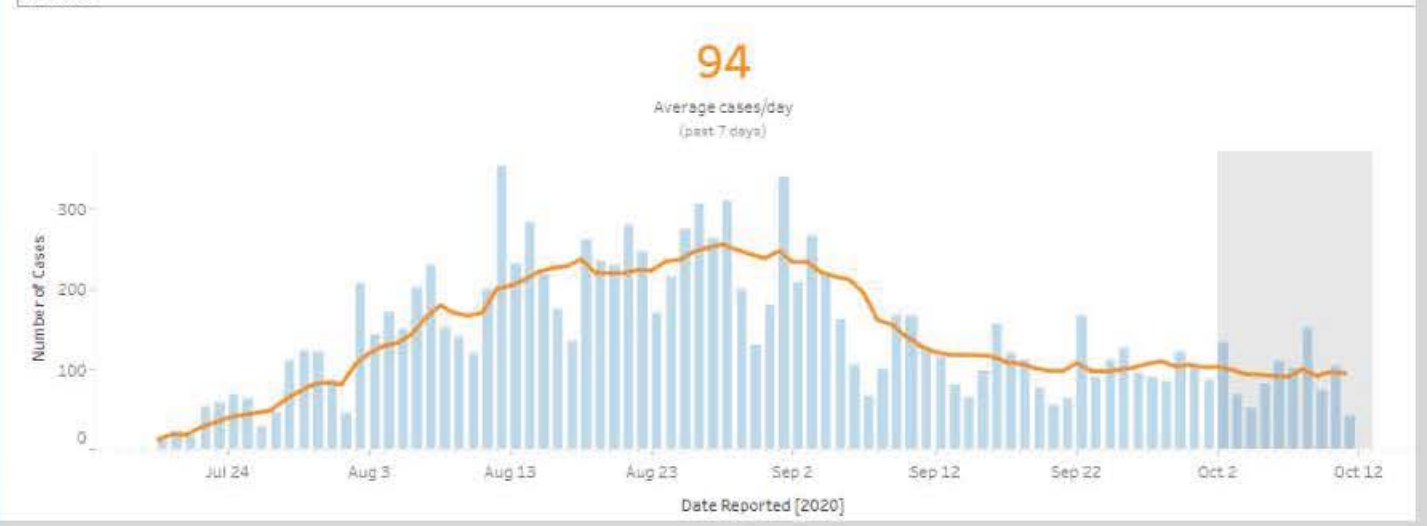
Hospitalized Trend

RELEASED FROM ISOLATION

10,781

Isolation Release Trend

Select County Statewide



DOH Epi Curve DOH COVID Cases (daily) DOH Testing/Positivity National data (via JHU) Cases Vulnerability Hub Testing Results Trends

Medical Info Last Updated: 10/12/2020, 5:01 PM

COVID-19 FORECASTS (SOURCE: HIPAM)



Surge Testing Tables (as of 10/06/20)

(Table 1) All Labs: Unique Individuals Tested by Clinical Labs & State Lab (SLD)

POSITIVE	332
NEGATIVE	49239
INCONCLUSIVE	0
TOTAL	49625

(Table 2) Surge Testing Only: Unique Individuals and Total Number of PCR Tests

LABS	POSITIVE	NEGATIVE	INCONCLUSIVE	TOTAL
Unique Individuals	340	55932	0	56272
Total Number of Surge Testing	342	57634	0	57976

FATALITIES

169
 0

*1 out of state

Fatalities Trend

FATALITY RATE (%)

1.25%

Rate Morgue

TOTAL POPULATION
 1,415,872

As of 10/6/20
 # OF PEOPLE TESTED
 308,090

NEGATIVE
 295,126
 95.792%

POSITIVE
 12,937
 4.199%

INCONCLUSIVE
 27



Hawaii Emergency Management Agency

3949 Diamond Head Road | Honolulu, Hawai'i 96816-4495

